



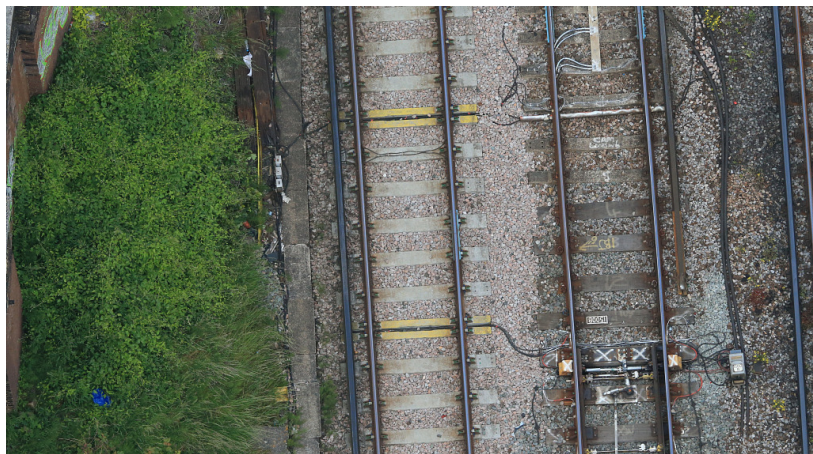
# RAILWAY AERIAL SURVEYS

## High resolution imagery of railway networks

Visivi has been used on numerous major rail projects in the UK and around the world, most recently assisting in the construction of a major new railway in the Middle East.

High resolution up-to-date aerial oblique images linked to detailed mapping forms the backbone of a collaboration tool invaluable to its' existing usership. Over 8,000 rail engineers in the UK alone consistently view over 10,000 images per day, replacing costly dangerous and time-consuming field visits, with estimated annual savings of £6.5M.

Design teams from France's flagship Synerail and the UK's Network Rail consistently use the system and credit Visivi with huge cost and efficiency savings.





## Uses:

- New Rail Route Identification
- Key Constraint Analysis
- EIA Production
- Stakeholder and authority Presentations
- Pre-Construction Baseline Surveys
- Post-Construction Comparisons
- Hand-over Tool to Operations
- Fence line Surveys
- Vegetation Surveys
- Land use Monitoring
- Cow Incursions
- Access Issues
- Earthworks and Cutting Monitoring
- Cliff Face / Rock Fall monitoring
- Integrity Monitoring

Thousands of overlapping oblique images of the entire railway network are captured and delivered as a virtual-site-visit.

Once uploaded to our cloud-based system, Visivi eliminates the very time consuming and inefficient task of aimlessly scrolling through each image by ensuring fast and efficient visualisation of the network in a geographic context (one click on the map takes you to the associated image), while data relating to the route can be overlaid at will. Visivi therefore assists railway personnel across a wide spectrum of applications from route selection to operations.